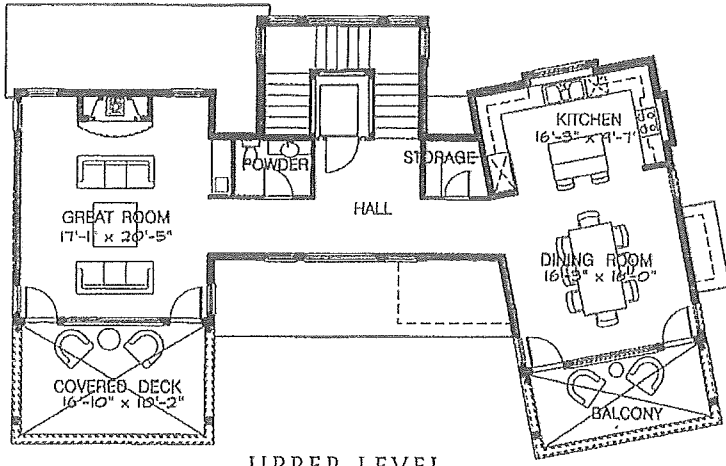
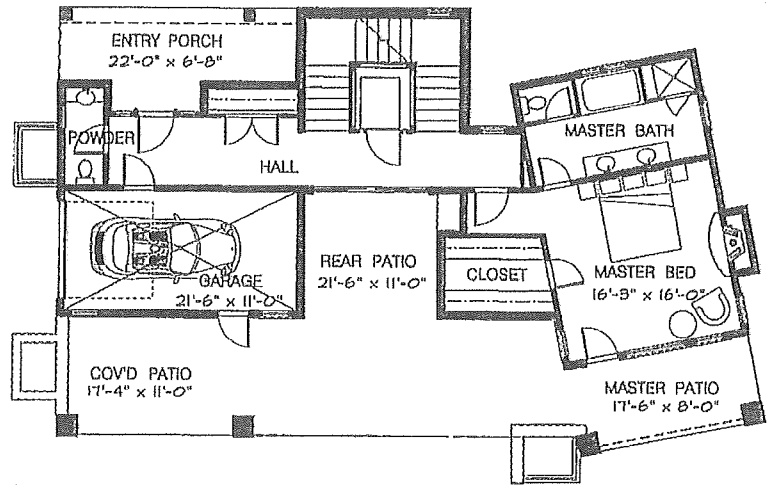


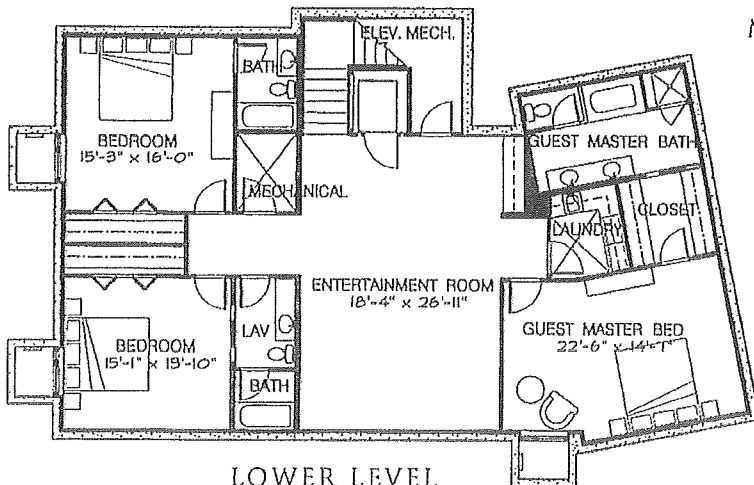
  
 FLOOR PLAN  
 LUXURY HOME 0



UPPER LEVEL



MAIN LEVEL

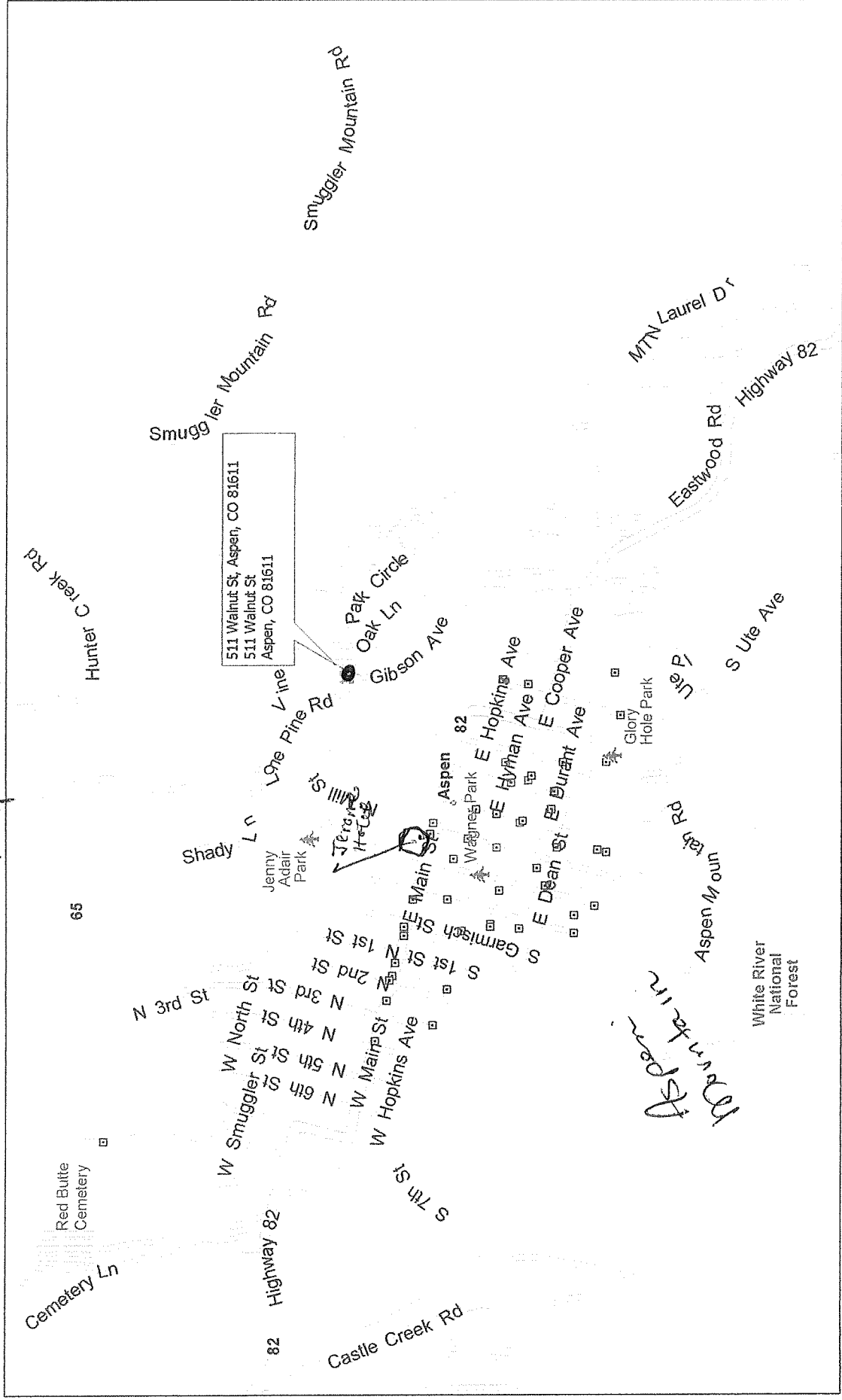


LOWER LEVEL

*The descriptions and images shown in this sheet and brochure are artist's and architect's proposed renderings based on current development plans. They are intended to provide general information about the proposed plans for the development of Fox Crossing Aspen. These proposed plans are subject to change in whole or in part, at any time without notice. There is no guarantee that any proposed illustration or description will be implemented as depicted or described, or if implemented, will be of the same type, design or size as shown.*

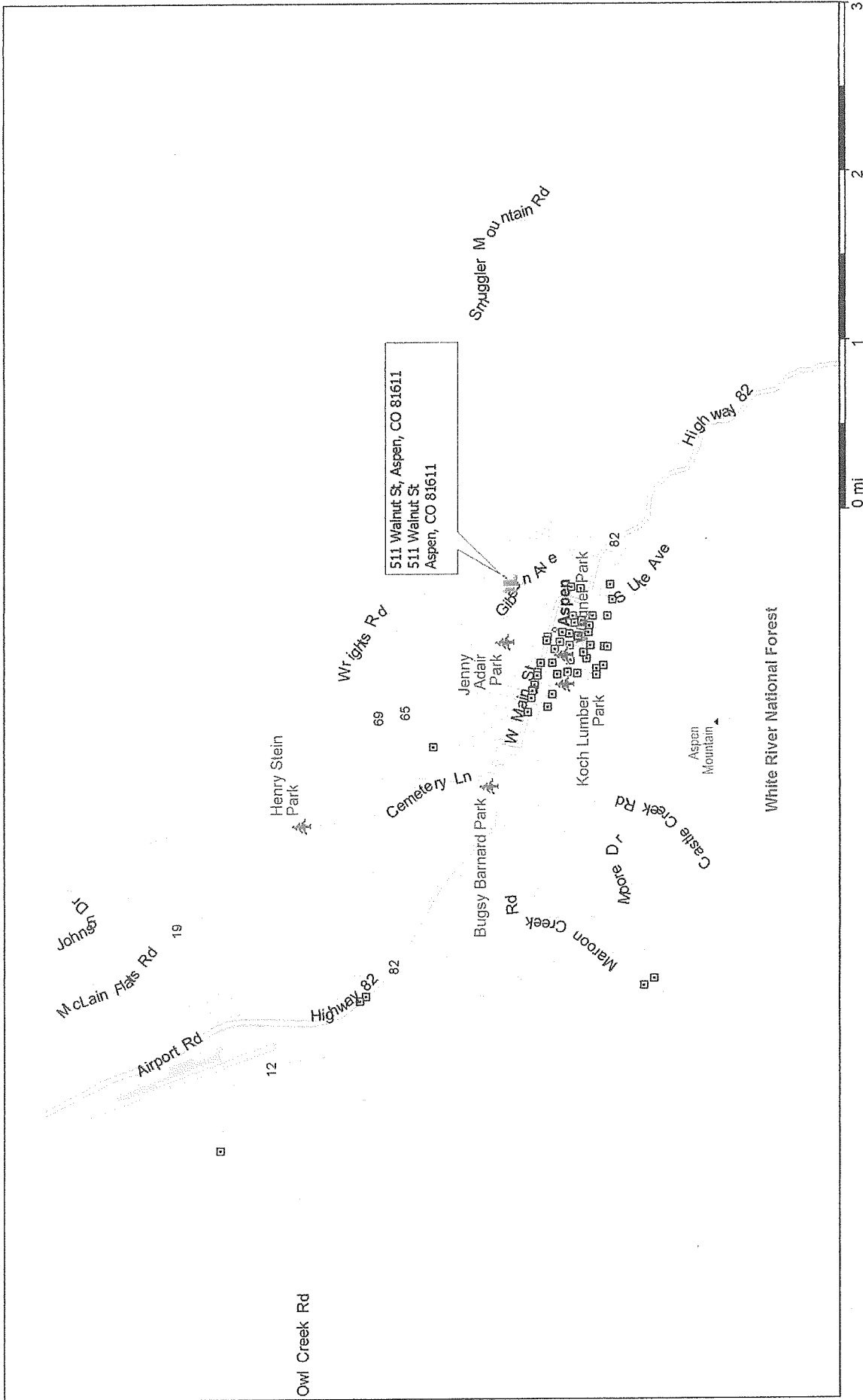
# Red Mountain

Aspen, Colorado, United States



Copyright © and (P) 1998-2010 Microsoft Corporation and/or its suppliers. All rights reserved. <http://www.microsoft.com/streets/>  
Certain mapping and direction data © 2010 NAVTEQ. All rights reserved. The Data for areas of Canada includes information taken with permission from Canadian authorities, including: © Her Majesty the Queen in Right of Canada, © Queen's Printer for Ontario, NAVTEQ and NAVTEQ ON BOARD are trademarks of NAVTEQ. © 2010 Tele Atlas North America, Inc. All rights reserved. Tele Atlas and Tele Atlas North America are trademarks of Tele Atlas, Inc. © 2010 by Applied Geographic Systems. All rights reserved.

# Aspen, Colorado, United States



Copyright © and (P) 1988-2010 Microsoft Corporation and/or its suppliers. All rights reserved. <http://www.microsoft.com/streets/>  
Certain mapping and direction data © 2010 NAVTEQ. All rights reserved. The Data for areas of Canada includes information taken with permission from Canadian authorities, including © Her Majesty the Queen in Right of Canada, © Queen's Printer for Ontario, NAVTEQ and NAVTEQ ON BOARD are trademarks of NAVTEQ. © 2010 Tele Atlas North America, Inc. All rights reserved. Tele Atlas and Tele Atlas North America are trademarks of Tele Atlas, Inc. © 2010 by Applied Geographic Systems. All rights reserved.