

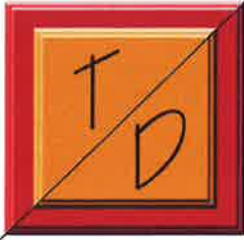


TRUE DIMENSIONS

Accurate Calculations for Square Footage

189
FOX LANE
SNOWMASS
VILLAGE





TRUE DIMENSIONS

Accurate Calculations for Square Footage



**This report
has been prepared
for the
measured address**

**189 Fox Lane
Snowmass Village
Colorado 81615**

By

True Dimensions

June 4, 2008

True Dimensions
P.O. Box 10431
Aspen, CO 81612

Phone: 970-618-8351
Fax: 970-925-2498

Email: AspenTrueDimensions@comcast.net



TRUE DIMENSIONS

Accurate Calculations for Square Footage

CERTIFICATE OF MEASUREMENT

Property: 189 Fox Lane
Snowmass Village, CO 81615

The undersigned hereby certifies that we have measured the property described above, on June 4, 2008 and our findings are as follows:

The Living Heated Square Footage (LVHT SF) 5,121 square feet

The Living Heated Square Footage measurement includes the lower, main and upper levels of the residence which are heated, dry walled, and which are used as living space. The property contains a garage that consists of 588 sq. ft. and is not included in the calculation for "Total Heated Livable" area. The lower level is below grade and contains an unfinished storage area that totaled 530 sq. ft. and is not included in the calculation for "Total Heated Livable" area.

The above findings have been calculated in accordance to the guidelines for the American National Standards Institute (ANSI) for Single Family Homes, applicable to the Town of Snowmass Village, State of Colorado, County of Pitkin. To the best of our knowledge, the exterior walls on the main and upper levels measured at 6 1/2 inches, and accordingly, pursuant to the Guidelines, 6 1/2 inches has been added to the dimensions in calculating square footage to include the exterior walls. The lower level is below grade and constructed with part 8" thick concrete walls plus 2 X 6 inch stud walls and part 6 1/2 inch walls and therefore, the appropriate dimensions has been added in calculating square footage to include the exterior walls

True Dimensions has exercised its best efforts to perform on-site measurement of the property as accurately as possible. It is understood however that there can be some uncertainty with respect to the accuracy of any square footage measurement due to variations in finished surfaces as well as interior and exterior wall construction, as well as other factors.

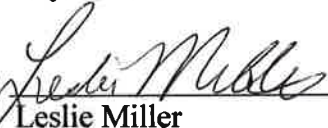
True Dimensions
P.O. Box 10431
Aspen, CO 81612

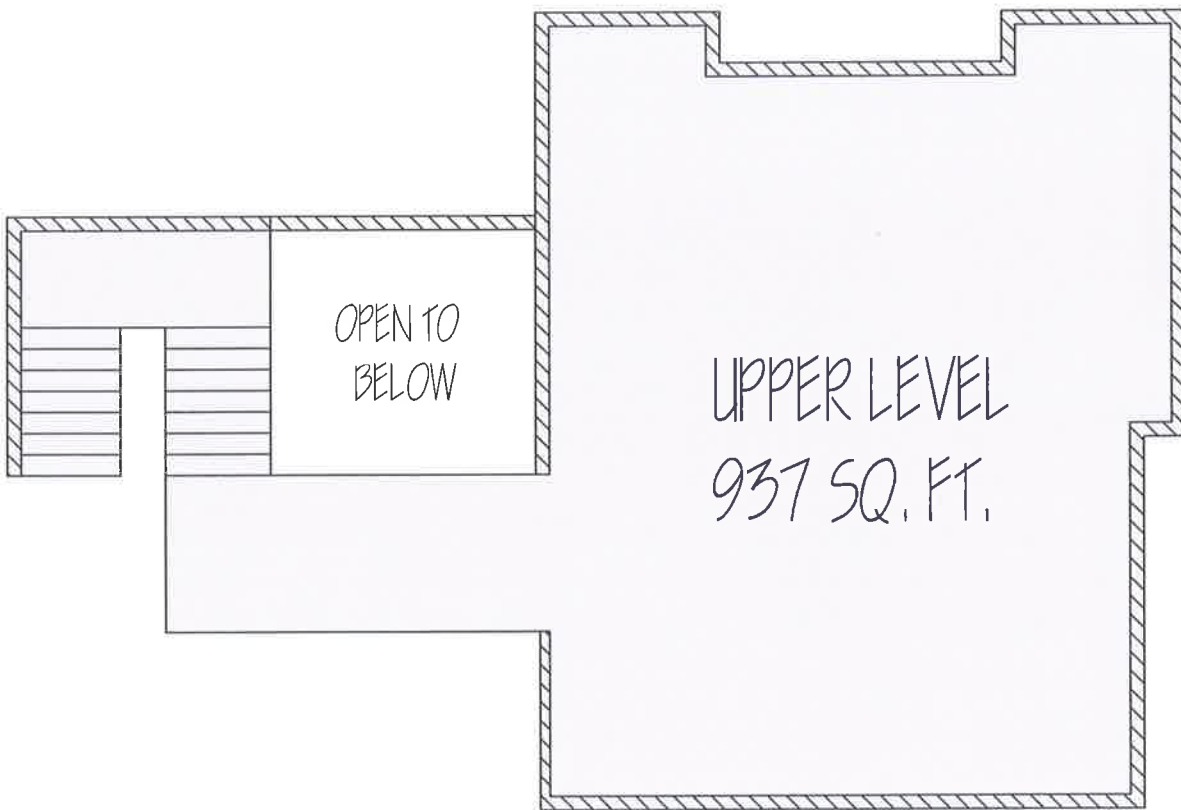
Phone: 970-618-8351
Fax: 970-925-2498

Email: AspenTrueDimensions@comcast.net

Certificate dated: June 4, 2008

TRUE DIMENSIONS

by: 
Leslie Miller

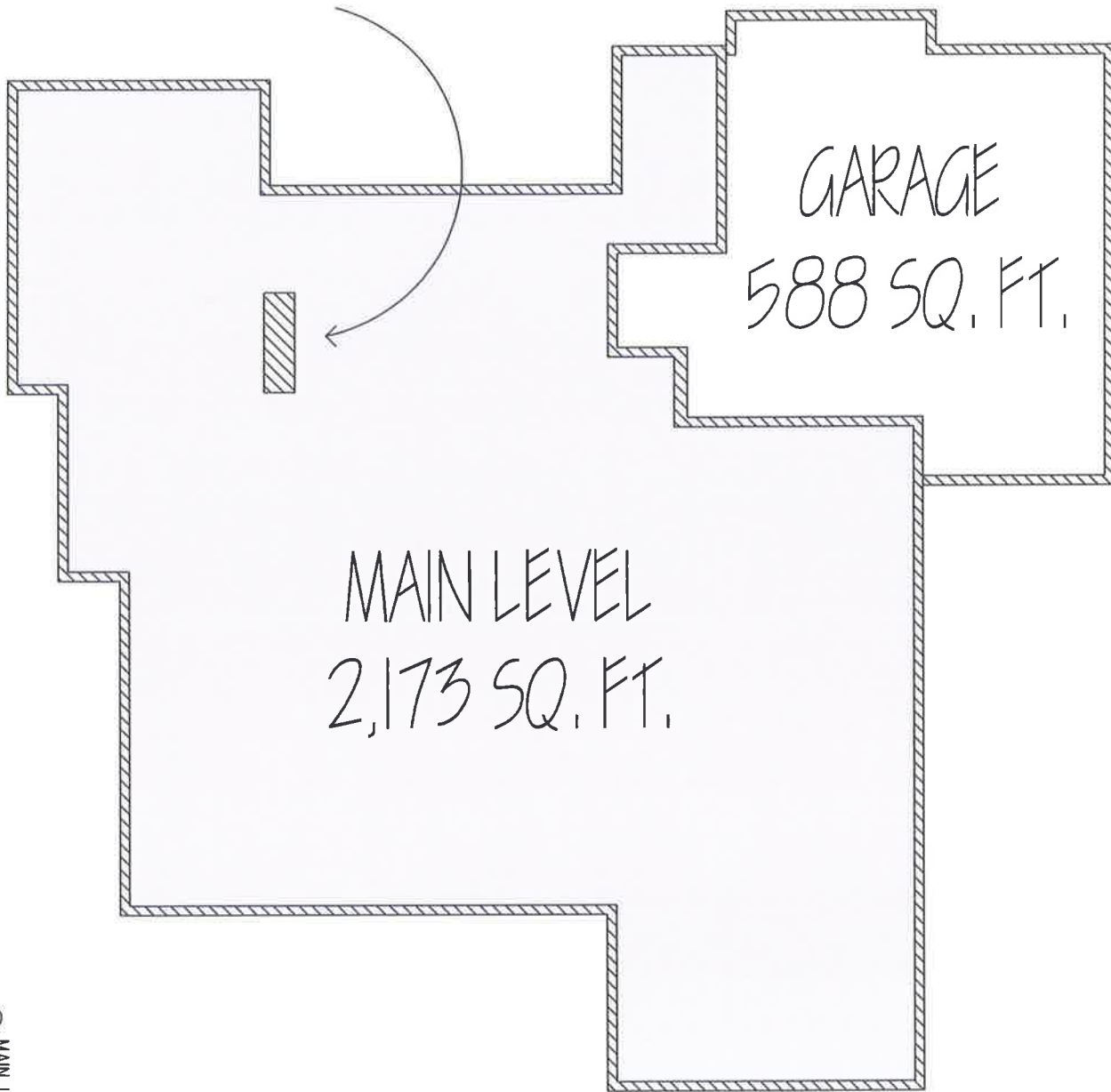


① UPPER LEVEL

Areas shaded in gray are included in "Living Heated Square Footage" calculation

1.1		TRUE DIMENSIONS P.O. BOX 10431 ASPEN COLORADO 81612 (970) 618-8351	189 Fox Lane Upper Level JUNE 2008 Snowmass Village Colorado		
-----	--	--	---	--	--

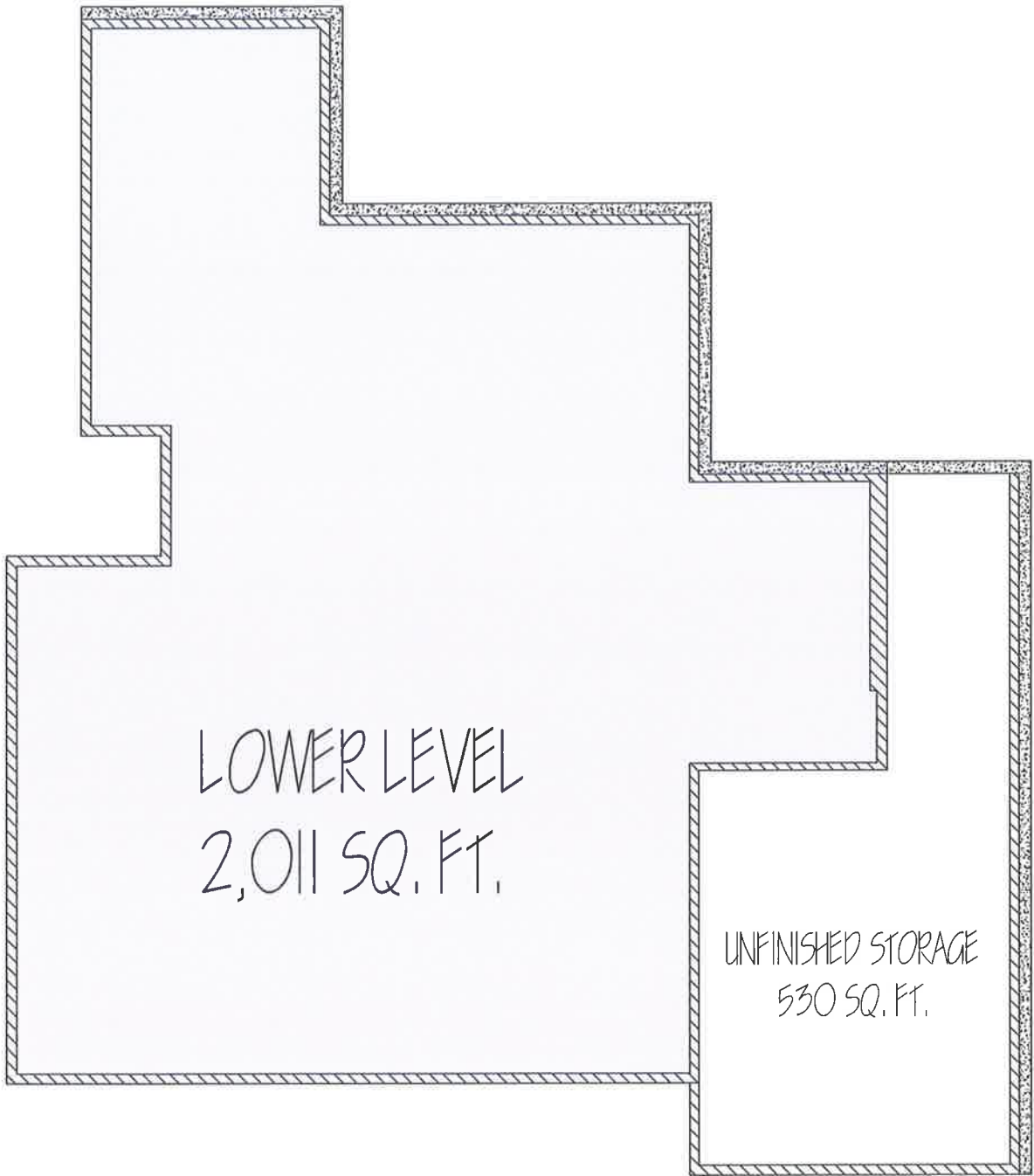
AREA OPEN
TO BELOW
NOT INCLUDED



① MAIN LEVEL

Areas shaded in gray are included in "Living Heated Square Footage" calculation

1.2		TRUE DIMENSIONS P.O. BOX 10431 ASPEN COLORADO 81612 (970) 618-8351	189 Fox Lane Main Level JUNE 2008 Snowmass Village Colorado		
-----	--	--	--	--	--



LOWER LEVEL
2,011 SQ. FT.

UNFINISHED STORAGE
530 SQ. FT.

BELOW GRADE

① LOWER LEVEL

Areas shaded in gray are included in "Living Heated Square Footage" calculation

1.3		TRUE DIMENSIONS P.O. BOX 10431 ASPEN COLORADO 81612 (970) 618-8351	189 Fox Lane Lower Level JUNE 2008 Snowmass Village Colorado		
-----	--	--	---	--	--